

Hybrid strobe and lamp | Plug-and-play with subsea cameras

A high-efficiency, TTL synchronized **subsea LED** that operates as both a lamp and a strobe. It can be integrated into subsea ROV, observatory, drop, tow, and battery-deployed camera systems.

The Aquorea can simultaneously operate as a lamp and strobe. When taking a photo, the LED's activation time is tightly synchronized with the camera sensor exposure time to ensure the video stream is uninterrupted while collecting photos. SubC LEDs and lasers are plug-and-play when coupled with the **Rayfin camera**.



Specifications		Aquorea LED White
Light Specs	Lamp Output	Up to 15000 Lumens
	Colour	5000K
	Beam Angle	80° (circular)
	Strobe Output	32000+ Lumens
	Reaction Speed	Approx. 190 Microseconds
Electrical	Efficiency	180 Lumen/Watt @ 15°C water
	Protection	Short Circuit, UV-OV-RV, ESD, OT
	Thermal Protection	Auto Dim/Shutoff
	Control	Serial RS-485
	Strobe	TTL 5V (active high)
	Power	18-32 Vdc / 48-120 Watts
Mechanical	Min./Max. Temperature	-10°C - +20°C in water
	Materials	Sapphire, Grade 5 Titanium
	Weight	0.9kg in water, 1.5kg in air
	Depth Rating	6000m

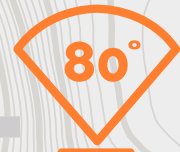
Specifications subject to change without notice. © 2010 SubC Control Ltd. All rights reserved. Rev. July 2021



Titanium construction

180lm/W

180 lumens per watt

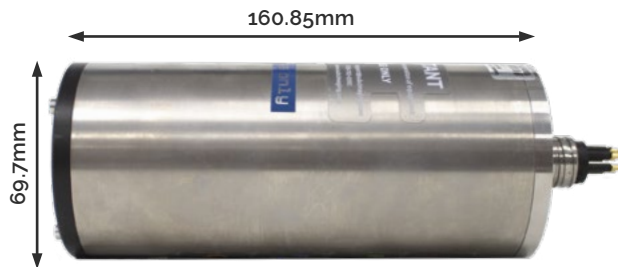
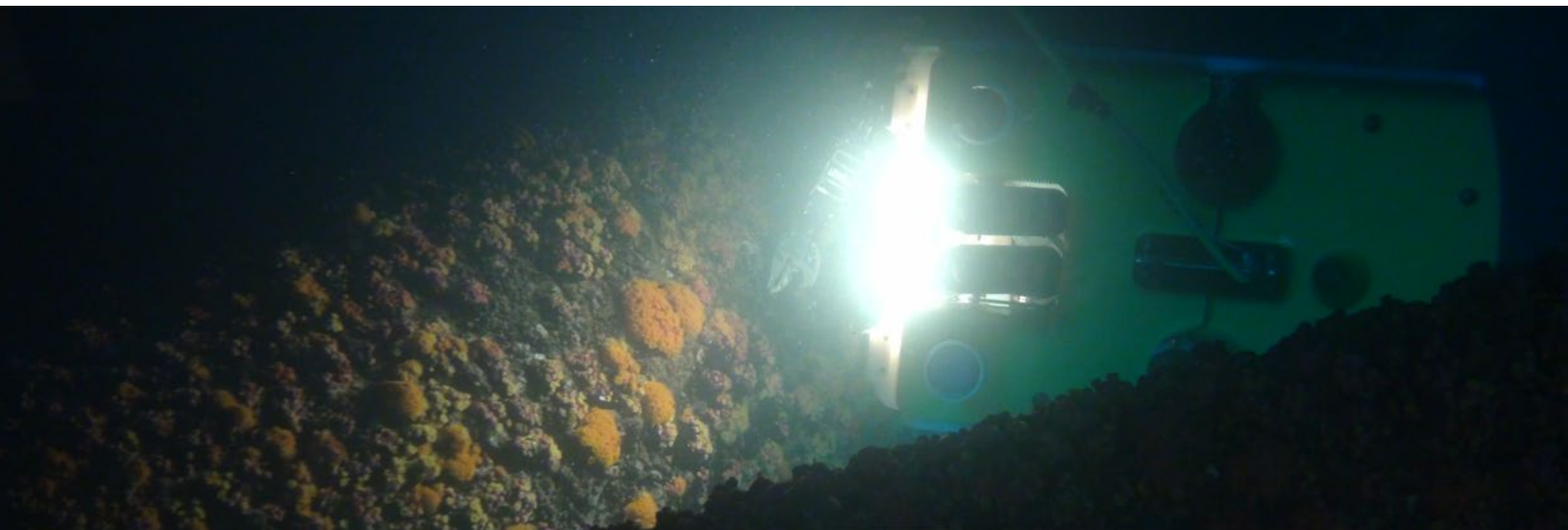
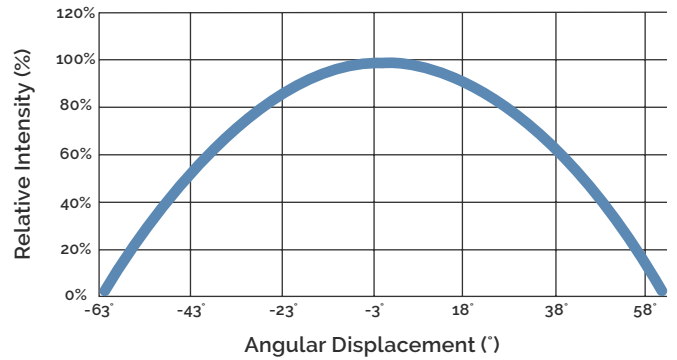


80° Beam Angle

Colour Options

The Aquorea LED is available for various specific deep-sea purposes like far-red (734 nm) for natural species behavior studies, deep-blue (457 nm) for subsea fluorescence and leak detection, and other wavelengths to meet your needs.

Aquorea LED Radiation Pattern in Water



Pin #	MCBH5M
1	GND
2	PWR
3	Strobe enable
4	RS-485 B(-)
5	RS-485 A(+)